

# **Codenomicon™ Robustness Tester for Bluetooth® Technology**

## **Setup and Quick Start Guide**

## Packing List for the Tester (Full and Eval. Versions)

- Codenomicon USB Security Key
- Codenomicon Bluetooth Transceiver
- This Setup and Quick Start Guide
- Envelope with Codenomicon Robustness Tester for Bluetooth Technology software CD-ROM containing:
  - Application Software
  - Codenomicon USB Security Key Driver
  - Codenomicon Bluetooth Transceiver Driver
  - Sun Microsystems Java Runtime Environment (JRE) version 1.5.0 update 1
  - Release Notes Text File
  - PDF Copy of this Quick Start Guide

**Note:** If you have already obtained the necessary hardware for the tester and need only the application software, then follow the [Download Codenomicon Components](#) instructions below.

## System Requirements (Full and Eval. Versions)

- PC with Windows XP Service Pack 2 or higher
- Pentium 500MHz processor or higher
- RAM Requirements: 128MB or greater
- 50 MB free Hard Disk Space
- 2 USB Ports to accommodate:
  - The Codenomicon USB Security Key
  - The Codenomicon Bluetooth Transceiver

# Table of Contents

Packing List for the Tester (Full and Eval. Versions) .....	i
System Requirements (Full and Eval. Versions) .....	i
<b>INTRODUCTION.....</b>	<b>1</b>
<b>Download Codenomicon Components .....</b>	<b>1</b>
<b>Evaluation Version of the Robustness Tester.....</b>	<b>1</b>
<b>INSTALLATION INSTRUCTIONS .....</b>	<b>2</b>
<b>Additional Information .....</b>	<b>5</b>
<b>USING THE ROBUSTNESS TESTER .....</b>	<b>5</b>
<b>Exiting the Robustness Tester.....</b>	<b>7</b>
<b>Technical Support.....</b>	<b>8</b>

## Introduction

The Codenomicon Robustness Tester for Bluetooth Technology verifies the capability of Bluetooth implementations to withstand invalid and malformed Bluetooth traffic.

To upgrade test suites, contact our sales department at [sales@fte.com](mailto:sales@fte.com) or by telephone at 1-800-359-8570 (U.S. and Canada only) or +1-434-984-4500 or visit our website at [www.fte.com](http://www.fte.com).

This Setup and Quick Start Guide gets you up and running quickly with the Codenomicon Robustness Tester. It provides systematic instructions for complete installation, and an overview of product operation.

The Robustness Tester interface is easy to use without training, but we recommend you read the online Help to take maximum advantage of all the features.

Before you begin, make sure that you received all of the items listed in the Packing List above, and that your system meets the System Requirements.

Access the PDF version of this Quick Start Guide on your installation CD.

## Download Codenomicon Components

Codenomicon application software and test suites may be downloaded at <http://www.fte.com/getcrt4bt>. This website provides detailed instruction for downloading your Codenomicon Robustness Tester. Then follow the download instruction in the installation steps below.

## Evaluation Version of the Robustness Tester

The evaluation version of the Robustness Tester consists of all the software and hardware items required to run the tester. However, each test suite contains only a sub-set of the test cases supplied with the full version.

To purchase a full version of the Robustness Tester, contact our sales department at [sales@fte.com](mailto:sales@fte.com) or by telephone at 1-800-359-8570 (U.S. and Canada only) or +1-434-984-4500 or visit our website at [www.fte.com](http://www.fte.com).

## Installation Instructions

### Step 1. Insert Software CD

Insert the software CD supplied with the tester into your CD drive.

If you downloaded your software, then skip to step 2.

### Step 2. Install the Codenomicon USB Security Key Driver

Browse to the *HASP* folder on your installation CD and double click the *HASPUserSetup.exe*.

If you are downloading the driver manually, the filename is *HASP\_HL\_driver\_setup.zip*. Download the ZIP file, unpack it and execute *HASPUserSetup.exe* to install the driver.

Follow the install instructions on the screen until the installation is complete.

### Step 3. Install the Codenomicon USB Security Key

Insert the USB Security Key into an available USB port.

Windows XP should recognize the USB Security Key automatically and install the necessary drivers for it via Windows Update. If your system encounters difficulties installing the drivers via Windows Update, then the drivers for the USB Security Key can be downloaded at [www.fte.com/getcrt4bt](http://www.fte.com/getcrt4bt) or directly from the USB key manufacturer at <http://www.aladdin.com/support/hasp/enduser.asp>.

Your system presents a message in your Windows system tray at the bottom of your screen informing you that the USB Security Key is ready.

### Step 4. Install the Java Runtime Environment (JRE)

**Note:** Skip this step if a suitable version of JRE version 1.5.0 update 1 or better is already present in the system

Browse to the *Java* folder on your installation CD and double click the *jre-1\_5\_0\_06-windows-j586-p.exe*.

You can download a JRE installation file for your operating system from <http://java.com/en/download/index.jsp>. For more information on the installation of the JRE, please refer to the JRE product documentation at <http://java.com/en/download/help/>.

### Step 5. Install Test Suites

Note that the installation will not start if the JRE has not been properly installed.

Begin the installation of the test suites by browsing to the *Installers* folder on your installation CD, and double click on it, or if you downloaded the test suites, then browse to the location on your workstation where you placed them.

Carefully follow the instructions in the test suite installer. The installation program installs the test suites and the accompanying documentation onto your hard disk, and creates shortcuts in the Start Menu.

## Step 6. Install the Codenomicon Bluetooth Transceiver and Drivers

Insert the supplied Codenomicon Bluetooth Transceiver device into an available USB port on your workstation. The *Found New Hardware Wizard* dialogue box appears which may ask if you want to connect to Windows Update to search for software. Choose *No, not this time* and click *Next*.



Figure 1 Hardware Update Wizard

## Step 7. Bluetooth Transceiver Install (Continued)

Choose *Install from a list or specific location* and click *Next*.

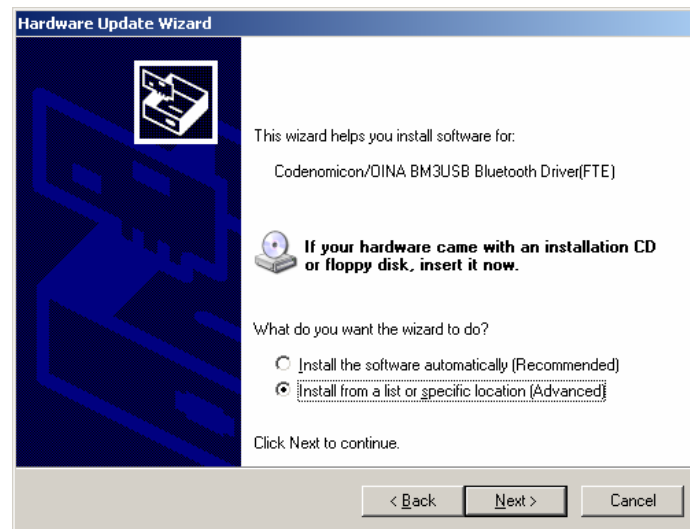
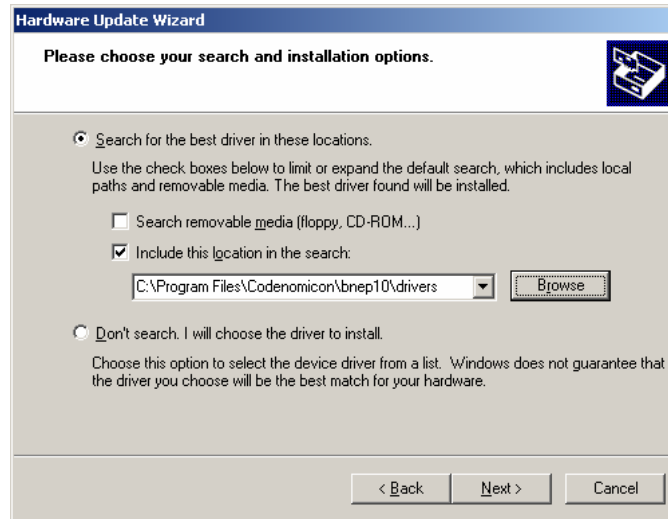


Figure 2 Hardware Update Wizard

## Step 8. Bluetooth Transceiver Install (Continued)

Select *Search for the best driver in these locations*, and the *Include this location in the search* checkbox. Browse to the *Drivers* folder in the directory where you

installed the Test Suites. The default directory is *C:\Program Files \ Codenomicon \ [Test Suite Name] \ Drivers*. Select the appropriate directory and click *OK*.



**Figure 3 Select File Location Dialog**

**Step 9. Bluetooth Transceiver Install (Continued)**

Click the *Next* button to finish the installation. If you get a dialog box like the one below, click *Continue Anyway*.



**Figure 4 Hardware Installation**

Your computer will now install the Codenomicon Bluetooth Transceiver driver from the directory you selected.

## Step 10. Finish

When the driver installation is complete, a message appears in your Windows tool tray at the bottom of your screen informing you that the Bluetooth Transceiver is ready.

The installation of your Codenomicon Robustness Tester for Bluetooth Technology software and hardware is now complete.

You are ready to begin testing your Bluetooth environment.

## Additional Information

If you encounter difficulties with any of the software contained on the CD, the USB Security Key, or the Bluetooth Transceiver, contact Frontline Technical Support at the numbers listed in the Technical Support section at the end of this guide.

## Using the Robustness Tester

Using your Robustness Tester is very easy. Simply follow the steps below and the instructions that appear on the screen.

### Step 1. Insert Hardware

Insert your USB Security Key and your Bluetooth Transceiver device into available USB ports on your workstation.

**Note:** The USB Security Key and the Bluetooth Transceiver device must remain attached to the computer for the duration of the test cycle.

### Step 2. Start The Tester

From the Windows operating system, select *Start / Programs / Codenomicon / [Test Suite Name]*. This starts the test tool in GUI mode.

### Step 3. Setup The Tester

After the test suite starts, the system displays the test setup screen with the name of the test suite you selected displayed in the Title bar.

Most fields available for test setup appear across all test suites; however, a few vary between suites.

The following list contains those fields displayed on the *Settings* tab that are common to all test suites. Consult the documentation displayed to the right of the *Settings* tab or the online help for information on test suite specific entries.

- **Indices of the test cases to run (optional)**

Enter the numerical identifier of the test case(s) you wish to run. A range of cases may also be selected. Leave this field blank to run all the test cases in the suite. Consult the documentation to the right of the *Settings* tab for guidance on entries made in this field.

- **Target Bluetooth device address (required)**

Enter the destination Bluetooth address to which the test cases will be sent.

**Note:** Enter the Bluetooth device address in the following format:

example            00:60:57:95:F0:11

If you do not know the address of the device, then select *Device Scan* from the *utilities* menu, and click the *Scan* button. The system finds and lists any Bluetooth devices within range of the Bluetooth Transceiver. Select the device to which the test case will be sent and click *Ok*. The *Device Scan* dialog closes and the selected device address appears in the *Target Bluetooth device address* field on the *Settings* tab.

- **Timeout for received replies (optional)**

Enter the time in milliseconds that the test driver waits for a response from the test implementation. Leave this field blank if no timeout is desired.

- **Delay between test cases (optional)**

Enter the time in milliseconds that the test driver pauses between test cases. Leave this field blank if no pause is desired.

- **Show sent messages check box**

Check this box if you wish to see the content of all sent protocol messages in the log results.

- **Show received messages check box**

Check this box if you wish to see the content of all received protocol messages in the log results.

- **Valid-case instrumentation check box**

Checking this box instructs the tester to send a valid message after each test case runs. This function tests the device for proper operation after each test case executes.

- **Loop test cases until interrupted check box**

Check this box if you wish to run a valid test case indefinitely against the implementation. Use this feature to test potential memory consumption issues.

- **External Instrumentation button**

This button accesses a dialog with user-configurable settings that execute during the test run. Consult the documentation to the right of *Settings* tab for guidance on entries made in this dialog.

- **Logging directory (optional)**

Use this field to enter the name and location of a log file for the test session for future reference.

- **Offered Bluetooth PIN**

If the destination Bluetooth address to which the test cases will be sent uses authentication, then the tester needs to know the PIN that the device uses to perform the authentication. Enter the PIN in this field.


The Bluetooth authentication process also establishes the encryption keys used during encrypted communication.

#### **Additional Instructions**

The documentation on the right side of the screen offers detailed information on test settings used to setup your test.

Access the help system by selecting *Help* from the Help Menu or by pressing *F1*.

#### **Step 4. Start The Test Suite**

After completing your test suite settings, simply click the *Run*  button on the toolbar to start the tests.

Click the *Log* tab or the *Statistics* tab to view test case progress in real-time. Click the *Summary* tab to view a report on the test case progress updated in real-time.

### **Exiting the Robustness Tester**

To exit the Codenomicon Robustness Tester for Bluetooth Technology:

Go to the *File* menu and choose *Exit*, or use the X icon in the top right corner of the title bar.

## Technical Support

Technical support is available in several ways. The online help system provides answers to many user related questions. Frontline's website has documentation on common problems, as well as software upgrades and utilities to use with our products.

Web: <http://www.fte.com>, click on Tech Support

Email: [tech\\_support@fte.com](mailto:tech_support@fte.com)

If you need to talk to a technical support representative, support is available between 9am and 5pm, U.S. Eastern time, Monday through Friday. Technical support is not available on U.S. national holidays.

Phone: +1 (434) 984-4500

Fax: +1 (434) 984-4505

---

Copyright © 2006 Frontline Test Equipment, Inc. All rights reserved. You may not reproduce, transmit, or store on magnetic media any part of this publication in any way without prior written authorization of Frontline Test Equipment, Inc.

Frontline is a registered trademark, and the Frontline logo is a trademark of Frontline Test Equipment, Inc.

Codenomicon is a trademark of Codenomicon Ltd.

### **License information for izPack**

<http://www.izforge.com/izpack/>

*The installer for this test tool is generated with izPack, a Java installer generator by Julien Ponge. izPack is released under Apache License, Version 2.0.*

**BLUETOOTH** is a trademark owned by Bluetooth SIG, Inc. and licensed to Codenomicon Ltd.

All other trademarks are property of their respective owners.