

## **Installation addendum for installing FTS for Bluetooth “Multi-unit”**

18-Feb-2004

Your copy of FTS for Bluetooth has been licensed for “Multi-unit” usage. Normally, each installed copy of FTS for Bluetooth has its own serial number. One, and only one, Bluetooth ComProbe would be assigned to a particular serial number in a normal installation.

This is often inconvenient in settings where more than one copy of FTS for Bluetooth has been purchased. Our users have found it inconvenient to keep track of which Bluetooth ComProbe goes with which installation.

“Multi-unit” usage provides flexibility in that all of our your Bluetooth ComProbes have been assigned to the same FTS for Bluetooth serial number. This will allow any one of your Bluetooth ComProbes to be used with any of your FTS for Bluetooth installations.

There are three things that must happen in order to enable your “Multi-unit” capability:

1. You will install each copy of FTS for Bluetooth that you have purchased using the same serial number.
2. You will enable each copy of FTS for Bluetooth for “Multi-unit” usage.
3. Any Bluetooth ComProbes that you already have in your possession will need to be activated for use with your new serial number.

The **Installation** section below covers the first two items. **Activating your Bluetooth ComProbes** deals with the last item.

### **Installation**

1. To install FTS for Bluetooth, refer to the “Setup and Quick Start Guide” that was provided with your product shipment. Follow the instructions given.
2. You should have received an executable program file whose name is <serial number>.exe, where <serial number> is your FTS for Bluetooth serial number. You may have received this file as an attachment to an email message, or on a CD-ROM.

Locate <serial number>.exe using Windows Explorer and double click on it. Follow the prompts. When you are asked to confirm overwriting of files, click “Yes to All”.

This step enables your FTS for Bluetooth installation for “Multi-unit” usage.

3. Repeat the above steps for each copy of FTS for Bluetooth that you purchased.

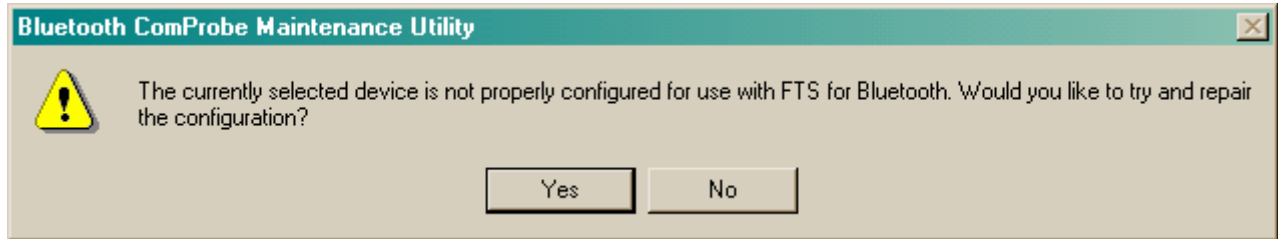
### **Activating your Bluetooth ComProbes**

**If this is a new product shipment, and you have just received your Bluetooth ComProbes, then they were properly activated at the factory and you are done. If you have in your possession Bluetooth ComProbes that you have been previously using with FTS for Bluetooth, then those devices will need to be activated.**

1. Your FTS for Bluetooth installation should contain a shortcut to a document entitled “Upgrading Your Bluetooth Comprobe”. Open this document and follow the instructions.

(For your convenience, this document is also being provided on your CD-ROM or with the email message you have received with your “Multi-unit” licensing information.)

2. Ignore the comment in step 3 of the instructions suggesting that you can skip to step 5. You will need to execute step 3.
3. The message box displayed in step 4 will not appear when you are working with Bluetooth ComProbes that you already had in your possession. Instead, you should see



4. Press the [Yes] button. The Bluetooth ComProbe Maintenance Utility should “think” for awhile, then it should display the message shown in step 4 of the instructions.

At that point, your Bluetooth ComProbe has been activated for use with you “Multi-unit” license.

This might be a good time to complete the instructions in the document and also upgrade your ComProbe firmware to the latest version.

[end]